

Communities Scrutiny Panel

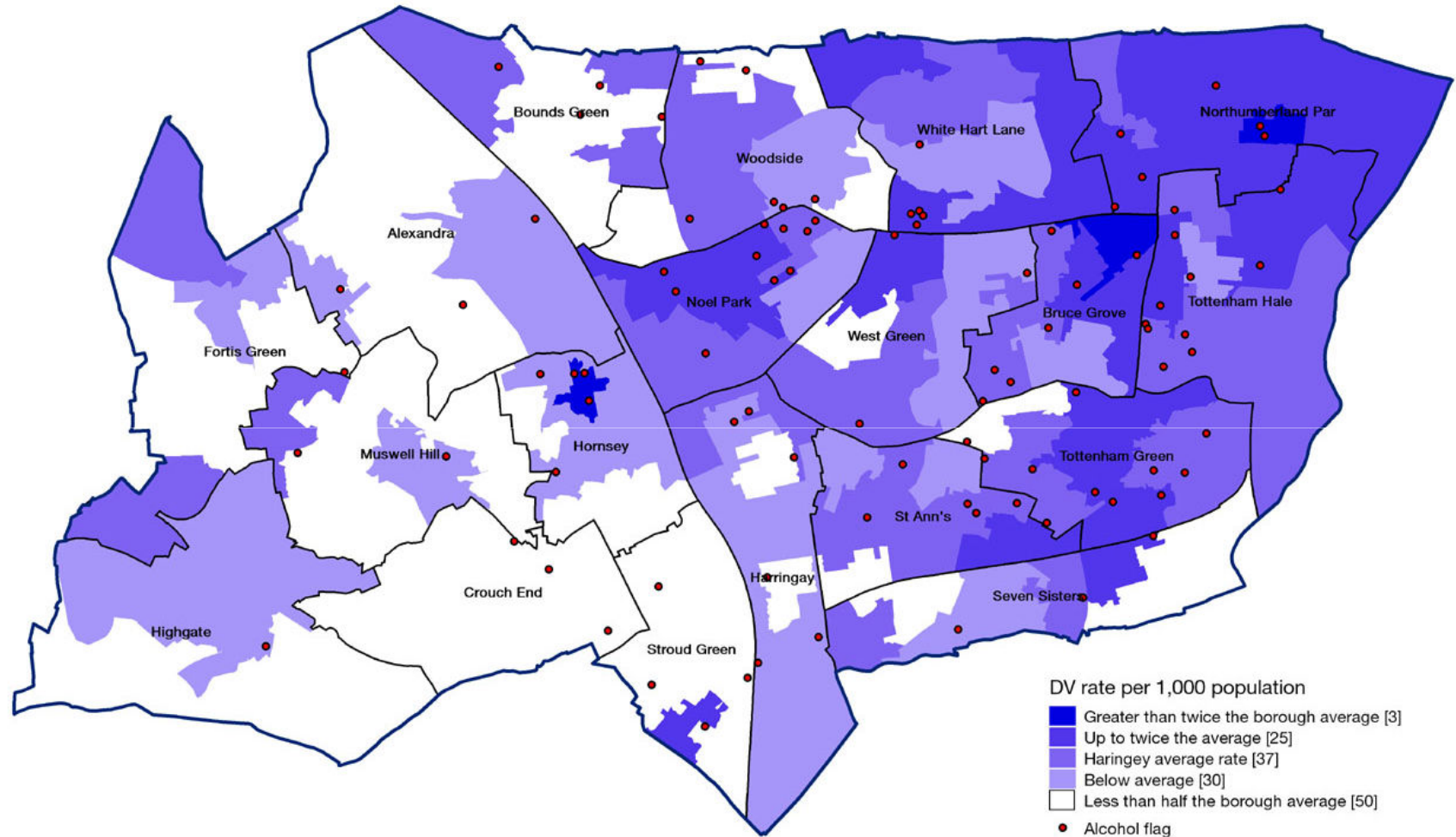
28 March 2013

Domestic violence in Haringey

What is domestic violence?

- Change in Home Office definition from 31 March 2013.
- Now includes:
 - controlling or coercive behaviour
 - 16 and 17 year olds.
- What will be the impact on local services?

Domestic violence offences - rate per 1,000 residents: Oct11-Sep12



DV rate per 1,000 population

- Greater than twice the borough average [3]
- Up to twice the average [25]
- Haringey average rate [37]
- Below average [30]
- Less than half the borough average [50]
- Alcohol flag



LSOAs classified within the 'average group' include those up to 20 per cent above or below the Haringey rate of 6.65 offences per thousand female residents

Prevalence and trends

- Police report 20% rise in reported incidents
- Annual cost to Haringey: c£27.6 million
- 80% of offences in the east
- Victims mostly young, female & heterosexual
- Reason for 34% of housing moves
- Strong links with mental health, alcohol & substance misuse (for victims & perpetrators)
- 55% of Hearthstone clients suffer emotional or so-called 'honour'-based violence
- 73% of incidents = repeat victimisation.

Children and young people

- Presenting issue for 20% of child protection plans, and 80% of child protection conferences
- More likely to begin or escalate in pregnancy, postpartum, and in violent or unstable teenage relationships
- More work to be done on understanding domestic violence and gangs/young people

How the Council and its partners deal with DV

- Coordinated community response with VCOs/statutory sectors
- Reports to Community Safety Partnership
- DV partnership=Strategic & Operational
- Priority: establish commissioning lead
- Well established links between DV coordinator and providers

Haringey's policy on domestic violence

Our vision: *Working in
partnership to promote healthy
and safe relationships to break
the cycle of abuse*

DV strategic direction and
delivery plan 2013-2016 nearing
completion

Outcome & priorities 2013-2016

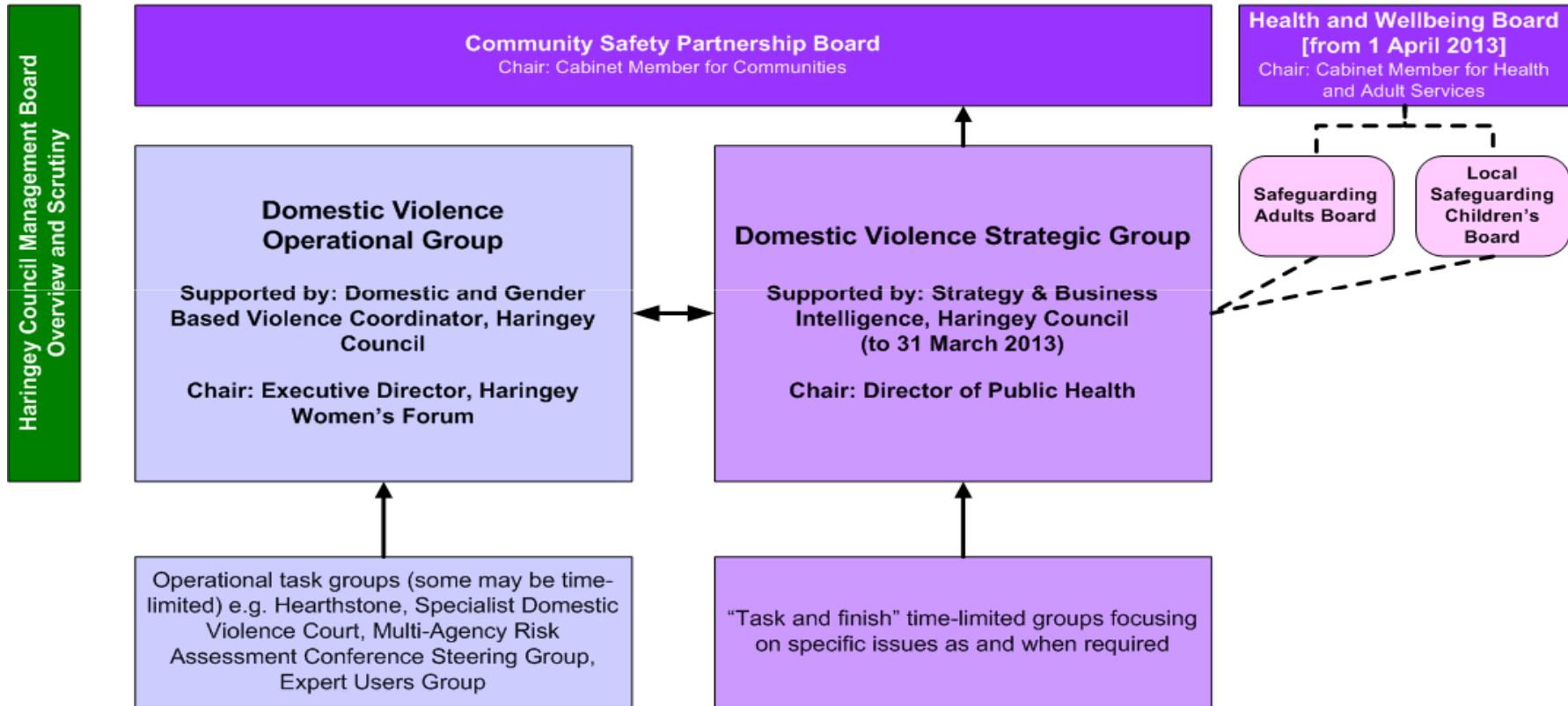
Two outcomes:

- Increased prevention and early identification & intervention
- A seamless service offering timely, effective and user-focused support
- Small number of priority actions for 2013/14 to strengthen ability to deliver actions identified for 2014/2016

Who owns the policy?

PARTNERSHIP WORKING TO REDUCE DOMESTIC AND GENDER BASED VIOLENCE IN HARINGEY

Solid lines = reporting links
Dotted lines = functional links



Further information

- Joint Strategic Needs Assessment - Domestic Violence:
http://www.haringey.gov.uk/index/social_care_and_health/health/jsna/jsna-wider-determinants/jsna-domestic_violence.htm
 - Wider needs assessment looking at the full definition of DV:
http://www.haringey.gov.uk/index/community_and_leisure/community_safety/domestic-violence/domesticviolencestrategy.htm
 - Where to find help:
http://www.haringey.gov.uk/index/community_and_leisure/community_safety/domestic-violence.htm
- Mayor of London's Office for Policing and Crime:
<http://www.london.gov.uk/priorities/crime-community-safety/tackling-priority-crimes/violence-against-women/access-support/victims-violence>
- Hearthstone, Haringey's DV advice and support centre:
http://www.haringey.gov.uk/index/community_and_leisure/community_safety/domestic-violence/hearthstone.htm